



Mauri Art

July 3, 2016 - July 6, 2016

Kiribati National Museum and Cultural Centre

P.O. Box 67

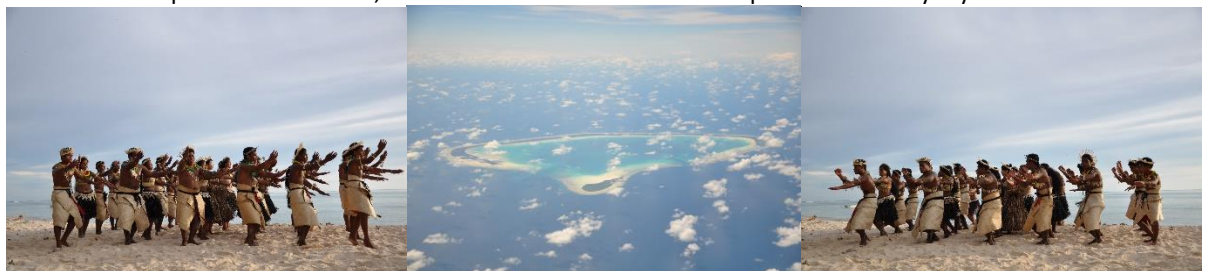
Bikenibeu, Tarawa

Kiribati

Curators : Pelea Tehumu, Nina Tepes

Exhibitors: Arin Tikiraua, Aanibo Bwatanita, Teniteiti Mikaere, Nimei Itinikarawa, Daniela Danica Tepes, Einako Temewi, Kaeriti Baanga, Raatu Tiuteke, Mikaere Tebwebwe, Katanuti Francis, Tokintekai Ekentetake, Teuea Kabunare, Rairaua Rue, Tamuera Tebebe, Tiribo Kobaua, Obeta Taia, Runita Rabwaa, Kaumai Kaoma, Kenneth Ioane, Teeti Aaloo, Tineta Timirau, Neneia Takoikoi, Teroloang Borouea, Temarewe Banaan, Kaeua Kobaua, Terita Itinikarawa, Ioanna Francis, Aanamaria Toom.

The artistic project as a whole stirs strong self-reflection in the viewers as it encourages them to reflect on human existence, human interventions into nature, and the resulting global warming. On the other hand, the project aims to arouse in the viewers mostly positive emotions, to teach them to respect traditional art, and to make art a more common part of our everyday life.



Kiribati National Museum and Cultural Centre

<http://institute-ergosum.org/kiribati-national-museum-and-cultural-centre-tarawa/>